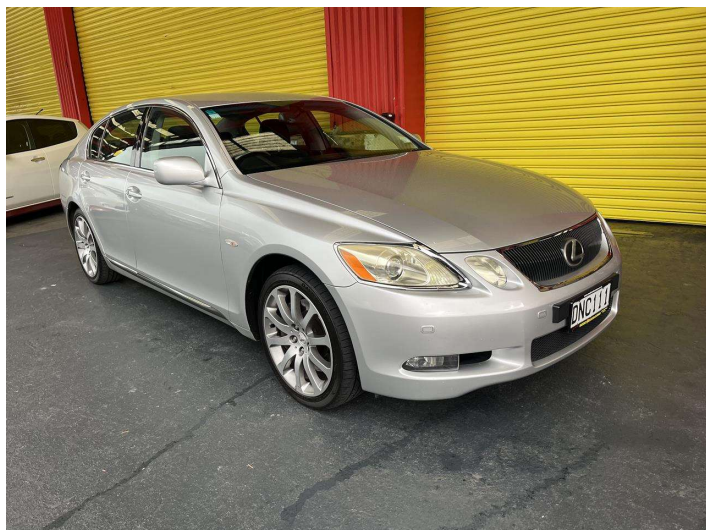


2006 Lexus gs300 L2 SEDAN 3.0P V6 6A



Purchase Price **\$9,995**
Includes GST, Registration & Licensing

Finance may be available on this vehicle. Ask one of our friendly staff for more information.

Gain peace of mind with Mechanical Breakdown Insurance. **Ask us how.**

- Top features**
- » ABS Brakes
 - » Air Bag(s)
 - » Air Conditioning
 - » Alloy Wheels
 - » Body Kit (Factory)
 - » Cruise Control
 - » Digital Display
 - » EFI
 - » Electric Windows
 - » Fog Lights
 - » Push Start Button
 - » Smart key
 - » Sports Exhaust
 - » Steering wheel control...

Body Style
4 door, Sedan

Odometer
170,752 km

Engine
2994 cc, Internal Combustion

Fuel Type
Petrol

Transmission
Automatic, Rear Wheel

Wheels
-

VIN
JTHBH96S605024755

Interior
Black, Leather

Safety
-

Reg No.
DNC111

Ext Colour
Silver

History
NZ New

Seats
5 seats

CO2 Emissions
-

Energy Economy
-

Stock ID: 27480



Trade In Clearance | Phone 04 566 6484 | Email sales@tradeinclearance.co.nz
125-127 Gracefield Road, Lower Hutt 5010, New Zealand
www.tradeinclearance.co.nz