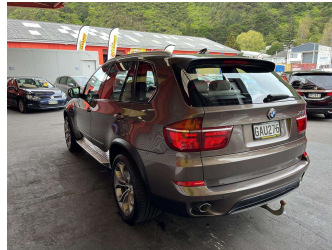


2011 BMW X5 Xdrive40d SAV 8A 5DR 3.0L



Purchase Price

\$18,995

Includes GST, Registration & Licensing

Finance may be available on this vehicle. Ask one of our friendly staff for more information.

Gain peace of mind with Mechanical Breakdown Insurance. **Ask us how.**

Top features

- » ABS Brakes
- » Air Bag(s)
- » All Wheel Drive
- » Alloy Wheels
- » Alloys
- » Body Kit (Factory)
- » Electric Windows
- » Leather Interior
- » Roof Rails
- » Steering wheel control...
- » Tow Bar
- » Turbo Charger

Body Style

5 door, RV-SUV

Odometer

181,123 km

Engine

2993 cc, Internal Combustion

Fuel Type

Diesel

Transmission

Automatic, 4WD

Wheels

-

VIN

WBAZW62030L478317

Interior

Maple

Safety



Based on 2023 UCSR rating for 07-13 models

Reg No.

GAU276

Ext Colour

Brown

History

NZ New

Seats

5 seats

CO2 Emissions

★ ★ ★ ☆ ☆ ☆

230 grams/km

Energy Economy

★ ★ ☆ ☆ ☆ ☆

Annual fuel cost of \$3,470

8.6L per 100km

Cost per year is an estimate based on diesel price of \$2.00 per litre and an average distance of 14000 km. Includes Road User Charges. Emissions and Energy Economy figures standardised to 3P WLTP.

Stock ID: 25699



Trade In Clearance | Phone 04 566 6484 | Email sales@tradeinclearance.co.nz
125-127 Gracefield Road, Lower Hutt 5010, New Zealand
www.tradeinclearance.co.nz