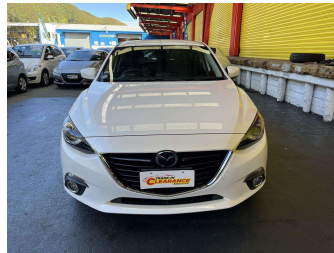


2016 Mazda Axela SKYACTIV LOW KMS



Purchase Price

\$22,995

Includes GST, Registration & Licensing

Finance may be available on this vehicle. Ask one of our friendly staff for more information.

Gain peace of mind with Mechanical Breakdown Insurance. **Ask us how.**

Top features

- » ABS Brakes
- » Air Bag(s)
- » Air Conditioning
- » Alloy Wheels
- » Body Kit (Factory)
- » Central Locking
- » Cruise Control
- » Cruise Control
- » Digital Display
- » EFI
- » Electric Mirrors (Retr...
- » Electric Windows
- » Face Lift Model
- » Flares
- » Rear Wiper
- » Roof Spoiler
- » Smart key
- » Steering wheel control...

Body Style

4 door, Hatchback

Odometer

9,023 km

Engine

1496 cc, Internal Combustion

Fuel Type

Petrol

Transmission

Automatic, Front Wheel

Wheels

-

VIN

7AT0C13JX23306601

Interior

Black, Suede

Safety



Based on 2023 UCSR rating for 13-19 models

Reg No.

-

Ext Colour

White

History

-

Seats

5 seats

CO2 Emissions

★★★★☆

135 grams/km

Energy Economy

★★★★☆☆

Annual fuel cost of \$2,270

5.8L per 100km

Cost per year is an estimate based on petrol price of \$2.80 per litre and an average distance of 14000 km. Emissions and Energy Economy figures standardised to 3P WLTP.

Stock ID: 25849



Trade In Clearance | Phone 04 566 6484 | Email sales@tradeinclearance.co.nz
125-127 Gracefield Road, Lower Hutt 5010, New Zealand
www.tradeinclearance.co.nz